

ESI C-Plus AND ESI C-Plus Executive Installer worksheets

Important: Before programming, make sure you initialize the system!

Function 1: System parameters

F11 — Initialization

F12 — Installer password

Range: 2–8 digits. Default: 789.

F13 — Administrator password

Range: 2–8 digits. Default: 456.

F14 — Set time/date

F141: Set time and date

F142: Automatic time settings

Synchronize with Caller ID

Default: Disabled.

Adjust for Daylight Saving Time

Default: Disabled.

F143: Clock adjustment

Range: –2 to +5.5 (minutes). Default: 0.

F15 — System timing parameters

F151: Flash hook duration

Range: 0.2–2.0 sec. Default: 1.5 sec.

F152: Transfer forward timer

Range: 1–9 rings. Default: 3.

F153: Recall timers

F1531: Exclusive hold recall timer

Range: 5–960. Default: 60.

F1532: Hold recall timer

Range: 5–960. Default: 60.

F1533: Hold recall timeout timer

Range: 2–40 rings. Default: 6.

F16 — System feature parameters

F161: Recording alert tone

Default: Disabled.

F162: Connect tone

Default: Enabled.

F163: Feature set activation

1. Group listen

Default: Disabled.

2. Privacy release

Default: Disabled.

3. Headset microphone gain adjust

Range: 0–5. Default: 2.

F165: Auto attendant parameters

1: Auto attendant inter-digit timer

Range: 40–1000 (400 ms to 10 sec.). Default: 200 (2 sec.).

2: Auto attendant no-response timer

Range: 50–6000 (500 ms to 1 min.). Default: 300 (3 sec.).

3: Fax energy level (CNG tone)

Range: 1–32767. Default: 70.

F166: CO parameters

1: CO-to-CO conference gain

Range: 100–32767. Default: 2048.

2: CO playback gain

Range: 1–12. Default: 6.

3: Trunk-to-trunk CO gain

Range: 1–12. Default: 11.

4: Delay before connection “beep-beep”

Range: 10–100 (100 ms to 1 sec.). Default: 20 (200 ms).

5: Caller ID gain

Range: 1–32767. Default: 20000.

F167: Voice mail parameters

1: Energy threshold

Range: 0–65535. Default: 500.

2: Recording silence value

Range: 200–3000 (2–30 sec.). Default: 350 (3.5 sec.).

3: Maximum message length (minutes)

Range: 1–30. Default: 3.

4: Page glare detection value

Range: 1 (enabled) or 2 (disabled). Default: 2.

5: Maximum messages in Message Recycle Bin

Range: 2–40. Default: 10.

F17 — System speed dial

<i>Loc.</i>	<i>Name</i>	<i>Number</i>
600		
601		
602		
603		
604		
605		
606		
607		
608		
609		
610		
611		
612		
613		
614		
615		
616		
617		
618		
619		
620		
621		
622		
623		
624		
625		

(Use a blank sheet for additional speed dial numbers 626–699.)

F18 — Serial port baud rate

1: Output device

Options: None, Serial, Ethernet.

2: Serial baud rate

Options: 300, 1200, 2400, 4800, 9600, 19200, 38400, 57600, 115200. Default: 38400.

3: SMDR format

Options: Standard or CSV. Default: Standard.

Function 2: CO lines

F21 — CO line programming

Options: Analog CO line. Default answer ring assignment for CO lines: ID1

Mode: _____ (day, night).

	Circuit	CO	Name	Line group	Ring tone	Ring 1	Ring 3	Ring 5	Ring 9
482 Config. Main Board:	1								
	2								
	3								
	4								
Slot # 482 Card:	1								
	2								
	3								
	4								

F22 — Translation table programming

F221: Centrex/ PBX access codes **Line group 9**

Default: 0.

Line group 8

Default: 0.

Line group 7

Default: 0.

F222: Toll restriction exception tables

Allow numbers (maximum, 100 entries):

Deny numbers (maximum, 100 entries):

F23 — CO line parameters

F231: Line receive volume

Range: 1–14. Default: 10.

F232: Line disconnect

Range: 1-255 (10–2,550 ms). Default: 6 (60 ms).

F24 — Caller ID

Options: Enabled, disabled. Default: Disabled.

Local – 7:

Local – 10:

Function 3: Extension programming

F31 — Extension definition and routing

For Digital Feature Phones

		Ext.	Type	Name	CO line groups	CF day	CF night	Pg zone	Ext.
		0		Operator					
482 Config. Main Board	1								
	2								
	3								
	4								
	5								
	6								
	7								
	8								
Analog	9								
	10								
482 Card	1								
	2								
	3								
	4								
	5								
	6								
	7								
	8								
Analog	9								
	10								

F32 — Extension feature authorization

Function 321

	Ext.	Name	Rec.	Toll allow	Sys. speed-dial	External frwdng.	Fwd. toll	Trunk-to-trunk xfer	Associated extension
	Default		Y*	Y	Y	N	N	N	
1									
2									
3									
4									
5									
6									
7									
8									
9									
10									
11									
12									
13									
14									
15									
16									
17									
18									
19									
20									

* Does not apply to 12-Key Feature Phones or analog extensions.

F33 — Department programming

Dept. types: In Order, All, UCD.

Dept. no.	Name	Type	Call waiting ¹	CF day	CF night
290					
Ext. List:					
291					
Ext. List:					
292					
Ext. List:					
293					
Ext. List:					
294					
Ext. List:					
295					
Ext. List:					
296					
Ext. List:					
297					
Ext. List:					
298					
Ext. List:					
299					
Ext. List:					

F35 — Extension button mapping

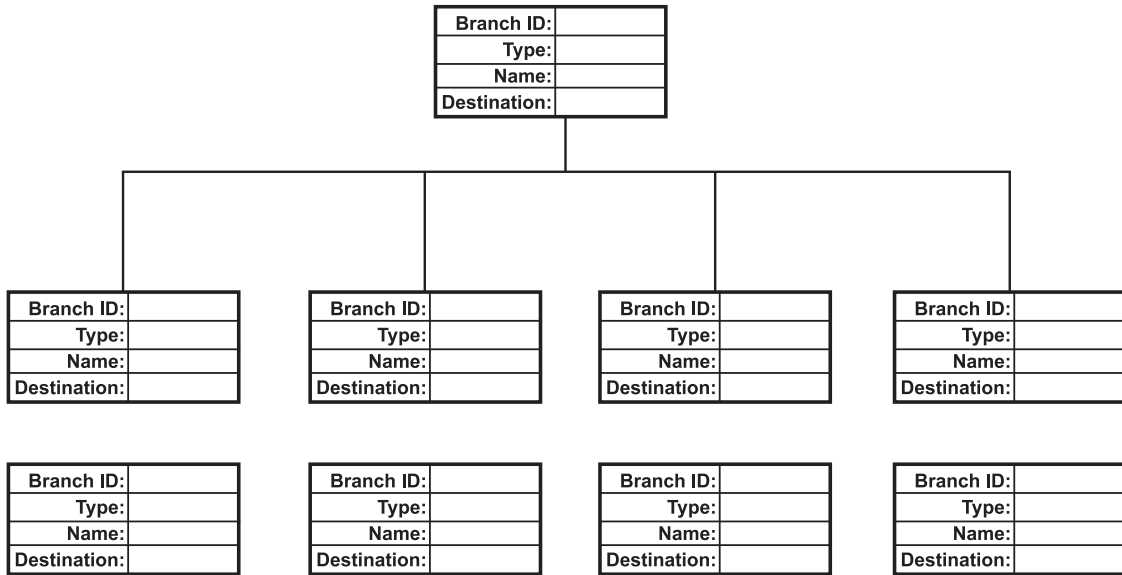
See “Function 35: Extension button mapping” in the *ESI-C-Plus and ESI C-Plus Executive Installation Manual* (ESI # 0450-1178) for button default based on the system configuration.

¹ Call waiting available for **only** “All” (ring-all) department type.

Function 4: Auto attendant programming

F41 — Auto attendant branch programming

Day
 Night



F43 — Automatic day/night tables

Note: Program using 24-hour format.

	MON		TUE		WED		THU		FRI		SAT		SUN	
	Start time	Mode	Start time	Mode	Start time	Mode	Start time	Mode	Start time	Mode	Start time	Mode	Start time	Mode
1														
2														
3														
4														
5														
6														

Function 5: Voice mail programming

F53 — Guest/info mailboxes

MB	Name	Type	Ext. fwd.*	Line grp.*	CFWD Day**	CFWD Night**

Make copies for additional mailboxes.

* External forwarding and Line group are settings do not apply to info mailboxes.
 ** CFWD Day and CFWD Night are settings that do not apply to guest mailboxes.

F55 — Message notification

F551: Station delivery options

Mailbox		Number	Delay	Attempts	Interval	Quiet on	Quiet off
Range	Phone	Up to 24 digits	0-500	0-99	10-1,440	None	None
Range	Pager	Up to 24 digits	0-500	0-99	10-1,440		
Default	Phone	None	0	3	30	None	None
Default	Pager	None	0	3	30		
1	Phone						
	Pager						
2	Phone						
	Pager						
3	Phone						
	Pager						
4	Phone						
	Pager						
5	Phone						
	Pager						
6	Phone						
	Pager						
7	Phone						
	Pager						
8	Phone						
	Pager						
9	Phone						
	Pager						
10	Phone						
	Pager						
11	Phone						
	Pager						
12	Phone						
	Pager						

Make copies for additional mailboxes.

F552: Delivery/paging parameters

CO line access

Range: 9, 8, 7. Default: 9.

Maximum lines

Range: 1-10. Default: 1.

Pager dialing pause

Range: 0-20. Default: 6.

F56 — Cascade notification mailboxes

Attempts — Range: 0–99. Default: 1.

Notification interval — Range: 0 (notify only once)–1,440. Default: 30.

MB	Option 1								Option 2
	1st number	Type	Attempts	2nd number	Type	Attempts	3rd number	Type	Interval
520									
521									
522									
523									
524									
525									
526									
527									
528									
529									

Function 6: Recordings

F61 — Re-recordable prompts

Prompt	Type	Default	Re-recorded
530	Busy prompt	<input type="checkbox"/>	<input type="checkbox"/>
531	No answer	<input type="checkbox"/>	<input type="checkbox"/>
532	Hold	<input type="checkbox"/>	<input type="checkbox"/>
534	Q/Z	<input type="checkbox"/>	<input type="checkbox"/>
535	No names matched	<input type="checkbox"/>	<input type="checkbox"/>
537	End of recording	<input type="checkbox"/>	<input type="checkbox"/>
540	Holiday main greeting	<input type="checkbox"/>	<input type="checkbox"/>

F62 — Record directory names

(Use the worksheet on the following page.)

Prompt for first name/last name

Options: "Select by first name" (default); "Select by last name."

F63 — Message-on hold-programming

F631: MOH source

Range: 590–598. Default: 592

F632: MOH recording

(See *Installation Manual* for instructions.)

F633: MOH volume

Range: 1–12. Default: 6

