

IVX C-Class Installer worksheets

These IVX C-Class Installer worksheets are for use with **either** IVX C-Class systems **or** IVX C-Class systems with voice mail.

Function 1: System parameters

Important: Before programming, make sure you initialize the system!

F11 — Initialization

F12 — Installer password

Range: 2–8 digits. Default: 789.

F13 — Administrator password

Range: 2–8 digits. Default: 456.

F14 — Set time/date

F141: Set time and date

F142: Automatic time settings

Synchronize with Caller ID

Default: Enabled.

Adjust for Daylight Savings Time

Default: Enabled.

F15 — System timing parameters

F151: Flash hook duration

Range: 0.2–2.0 sec. Default: 1.5 sec.

F152: Transfer forward timer

Range: 1–9 rings. Default: 3.

F153: Hold recall timer

Range: 5–960. Default: 60.

F157: Ring timeout¹

Range: 1–10 min. Default: 4 min.

¹ Generation II only.

F16 — System feature parameters

F161: Recording alert tone
Default: Disabled.

F162: Connect tone
Default: Enabled.

F163: Feature set activation²

1. Group listen
Default: Disabled.

2. Privacy release
Default: Disabled.

F17 — System speed-dial

(Use the worksheet on the following page.)

F18 — Serial port baud rate

2: Serial baud rate
Options: 300, 1200, 2400, 4800, 9600, 19200, 38400. Default: 38400.

3: SMDR format
Options: Standard or CSV. Default: Standard.

² Generation II only.

F17 — System speed dial

<i>Loc.</i>	<i>Name</i>	<i>Number</i>
600		
601		
602		
603		
604		
605		
606		
607		
608		
609		
610		
611		
612		
613		
614		
615		
616		
617		
618		
619		
620		
621		
622		
623		
624		
625		

(Use a blank sheet for additional speed dial numbers 626–699.)

Function 2: CO lines

F21 — CO line programming

Options: Analog CO line
 Default answer ring assignment for CO lines: ID1

Mode: _____ (day, night).

Circuit	CO	Name	Line group	Ring 1	Ring 3	Ring 5	Ring 9
1							
2							
3							
4							
5							
6							

F22 — Translation Table Programming

F221: Centrex/ PBX access codes

Line group 9

Default: 0.

Line group 8

Default: 0.

Line group 7

Default: 0.

F222: Toll restriction exception tables

Allow numbers (maximum, 100 entries):

Deny numbers (maximum, 100 entries):

F23 — CO line parameters

F231: Line receive volume

Range: 0–12. Default: 10.

F232: Line disconnect

Range: 1-255. Default: 6.

F24 — Caller ID

Options: Enabled, disabled. Default: Disabled.

--

Local – 7:

Local – 10:

Function 3: Extension programming

F31 — Extension definition and routing

For Digital Feature Phones

		Ext.	Type	Name	CO line groups	CF day	CF night	Pg zone	Ext.
		0		Operator					
Digital exts. 100–111	1								
	2								
	3								
	4								
	5								
	6								
	7								
	8								
	9								
	10								
	11								
	12								
Analog 112–113	13								
	14								

F32 – Extension feature authorization

	Ext.	Name	Toll Rec.	allow	Sys. spd. d.	Ext. fwd.	Fwd. toll	Trunk- trunk
	Default		Y*	Y	Y	N	N	N
1								
2								
3								
4								
5								
6								
7								
8								
9								
10								
11								
12								
13								
14								
15								
16								
17								
18								
19								
20								
21								
22								
23								
24								
25								
26								
27								
28								

* Does not apply to 12-Key Feature Phones or analog extensions

F33 – Department programming

Dept. types: In Order, All, UCD.

Dept. ext.	Name	Type	CF day	CF night
290				
Ext. List:				
291				
Ext. List:				
292				
Ext. List:				
293				
Ext. List:				
294				
Ext. List:				
295				
Ext. List:				
296				
Ext. List:				
297				
Ext. List:				
298				
Ext. List:				
299				

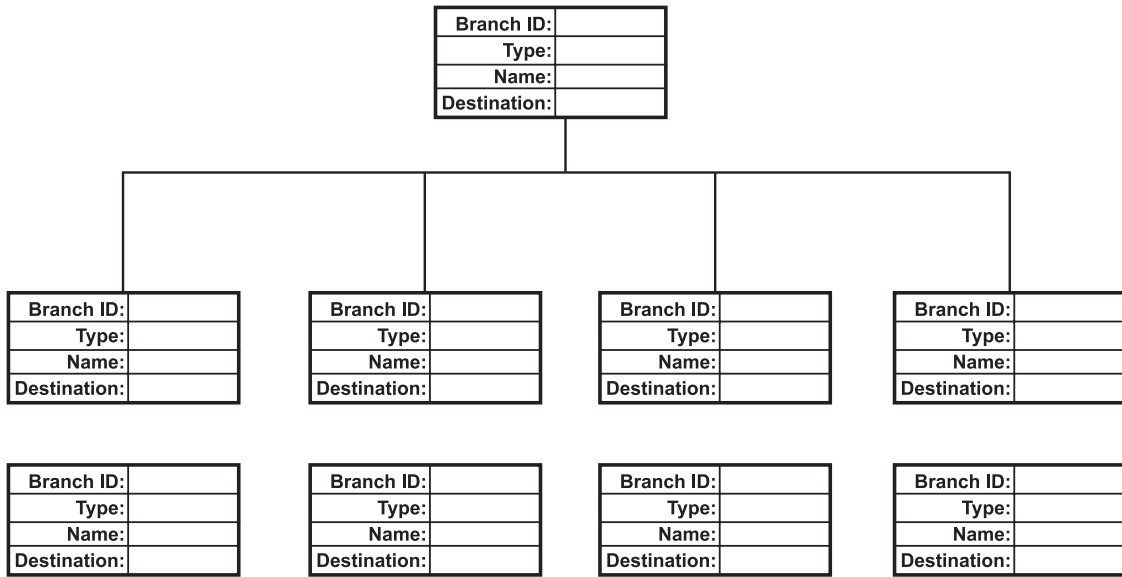
F35 – Extension button mapping

See “Function 35: Extension button mapping” in *IVX C-Class Installation Manual* for button default based on the system configuration.

Function 4: Auto attendant programming

F41 – Auto attendant branch programming

Day
 Night



F43 — Automatic day/night tables

Note: Program using 24-hour format.

	<i>Example</i>	MON	TUE	WED	THU	FRI	SAT	SUN
1	0800 D							
2	1200							
3	1300 D							
4	1730 N							
5								
6								

F55 — Message notification

F551: Station delivery options

Mailbox		Number	Delay	Attempts	Interval	Quiet on	Quiet off
Range	Phone	Up to 24 digits	0–500	0–99	10–1,440	None	None
Range	Pager	Up to 24 digits	0–500	0–99	10–1,440		
Default	Phone	None	0	3	30	None	None
Default	Pager	None	0	3	30		
1	Phone						
	Pager						
2	Phone						
	Pager						
3	Phone						
	Pager						
4	Phone						
	Pager						
5	Phone						
	Pager						
6	Phone						
	Pager						
7	Phone						
	Pager						
8	Phone						
	Pager						
9	Phone						
	Pager						
10	Phone						
	Pager						
11	Phone						
	Pager						
12	Phone						
	Pager						

Make copies for additional mailboxes

F552: Delivery/paging parameters

CO line access

Range: 9, 8, 7. Default: 9.

Maximum lines

Range: 1–19. Default: 1.

Pager dialing pause

Range: 0–20. Default: 6.

F56 — Cascade paging mailboxes

Attempts — Range: 0–99. Default: 0.

Paging interval — Range: 0 (page only once)–1,440. Default: 0.

Mailbox	Option 1			Option 2		
	1st number	Attempts	2nd number	Attempts	3rd number	Paging interval
520						
521						
522						
523						
524						
525						
526						
527						
528						
529						

Function 6: Recordings

F61 — Re-recordable prompts

Prompt	Type	Default	Re-recorded
530	Busy prompt	<input type="checkbox"/>	<input type="checkbox"/>
531	No answer	<input type="checkbox"/>	<input type="checkbox"/>
532	Hold	<input type="checkbox"/>	<input type="checkbox"/>
534	Q/Z	<input type="checkbox"/>	<input type="checkbox"/>
535	No names matched	<input type="checkbox"/>	<input type="checkbox"/>
537	End of recording	<input type="checkbox"/>	<input type="checkbox"/>
540	Holiday greeting	<input type="checkbox"/>	<input type="checkbox"/>

F62 — Record directory names

(Use the worksheet on the following page.)

Prompt for first name/last name

Options: "Select by first name" (default); "Select by last name."

F63 — Message-on hold-programming

F631: MOH source

Range: 590–598. Default: 592

F632: MOH recording

(See *Installation Manual* for instructions.)

F633: MOH volume

Range: 1–12. Default: 6

